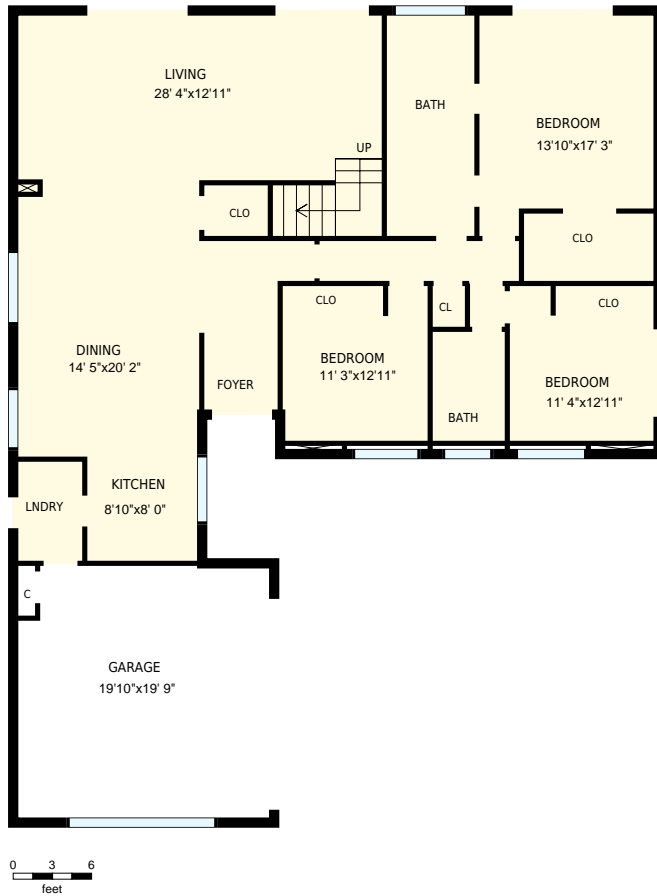


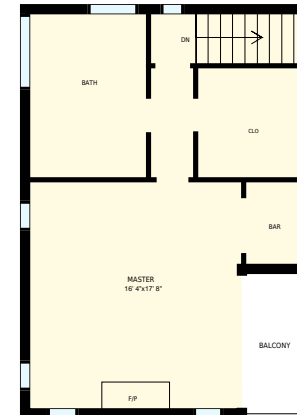


# 1118 Portesuello Ave, Santa Barbara, CA

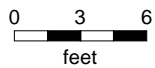
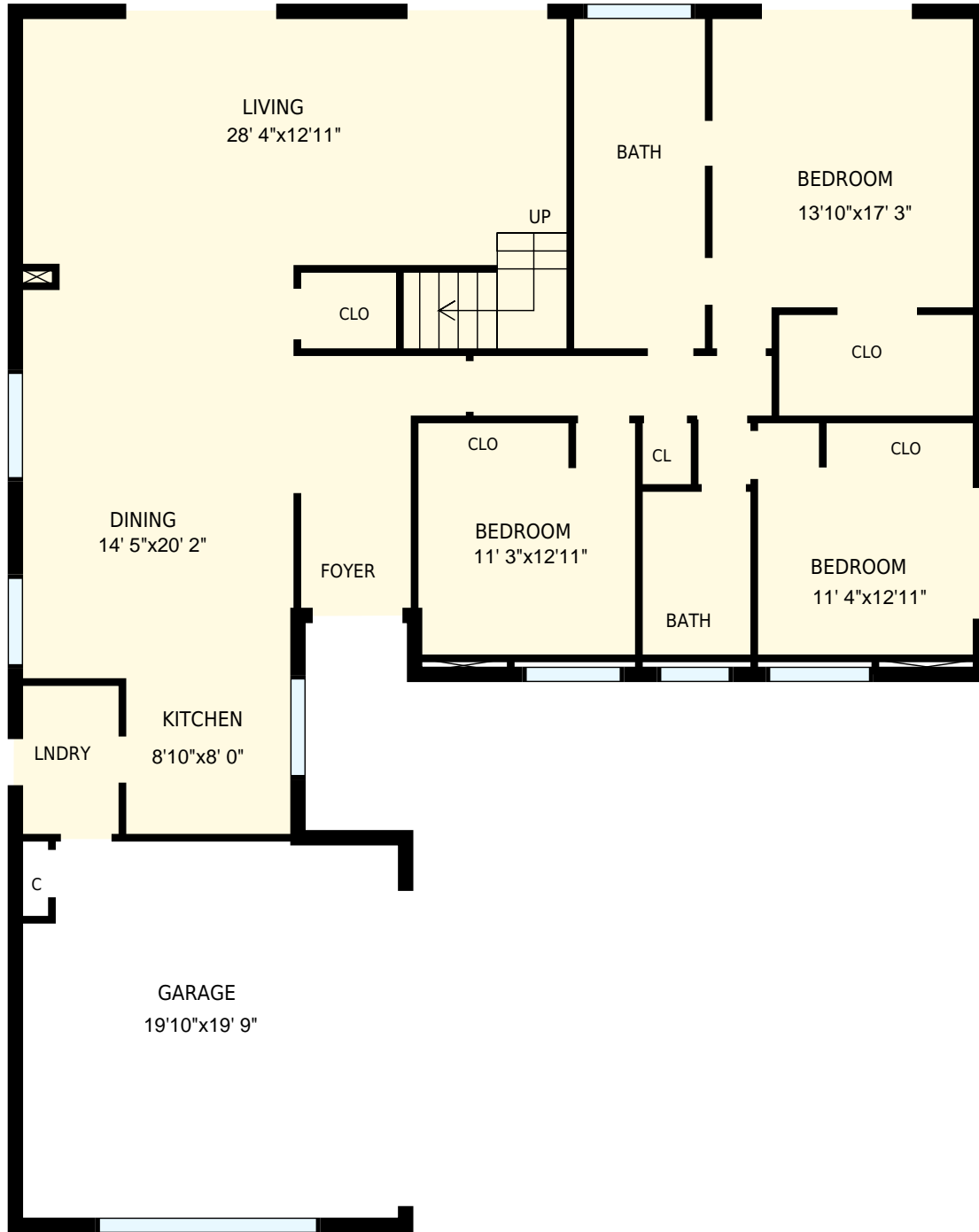
Total square footage - 2465 sq. ft.



**Main Floor**  
1820 sq. ft.



**2nd Floor**  
645 sq. ft.



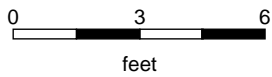
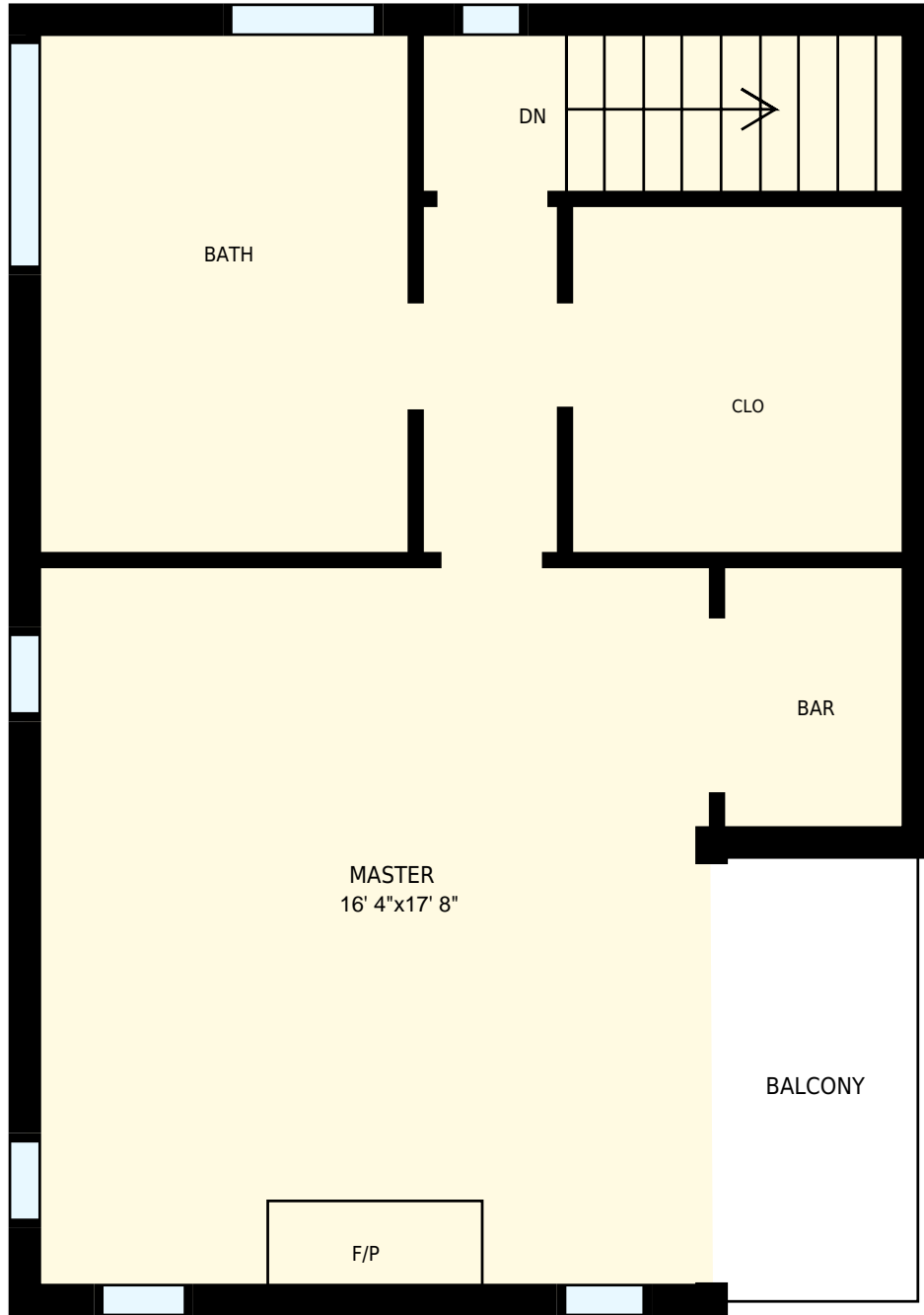
1118 Portesuello Ave, Santa Barbara, CA  
2465 Sq. Ft.

PREPARED FOR:  
Randy Freed & Kellie Clenet  
Realtor  
Berkshire Hathaway Home Services



PREPARED ON:  
Aug, 2017

All room dimensions and floor areas must be considered approximate and are subject to independent verification.  
For method of measurement please see <https://youriguide.com/measure/>.



1118 Portesuello Ave, Santa Barbara, CA  
2nd Floor

PREPARED FOR:  
Randy Freed & Kellie Clenet  
Realtor  
Berkshire Hathaway Home Services



PREPARED ON:  
Aug, 2017

All room dimensions and floor areas must be considered approximate and are subject to independent verification.  
For method of measurement please see <https://youriguide.com/measure/>.